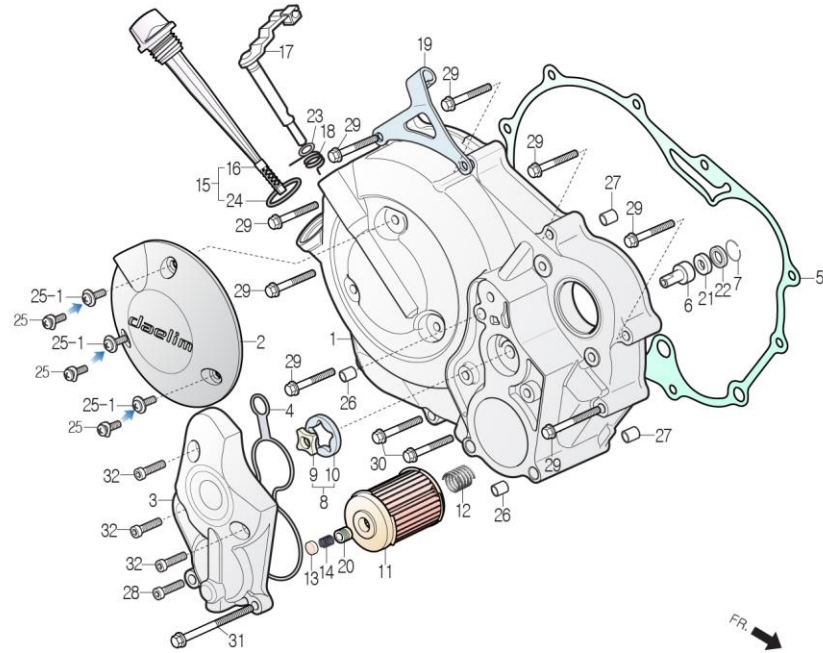


E-05

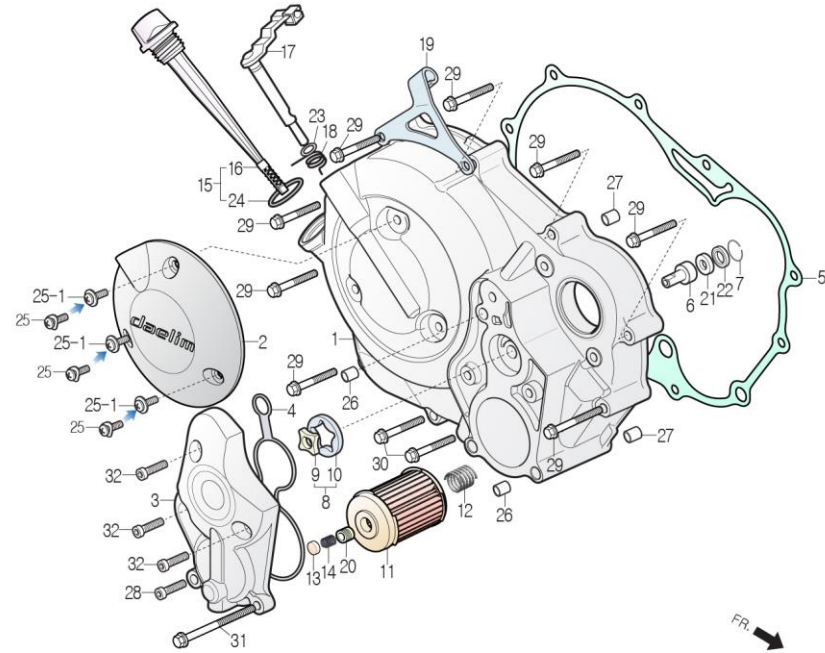
RIGHT CRANK CASE COVER



Service item	FRT	Ref No.	Part No.	Description	QTY	A/S	Exch	Start Date	End Date	Start FRM.No	End FRM.No		
COVER COMP., RH.CRANK CASE	0.9	1	11330-BA8-0000	COVER COMP., RH.CRANK CASE	1	Y	N	20070425	20100519	KMYBA8BLS7C000001	KMYBA8BLSAC003590		
			11330-BZ1-0000	COVER COMP., RH.CRANK CASE	1	Y		20100520		KMYBA8BLSAC003591			
COVER COMP., OIL FILTER ELEMENT, OIL FILTER	0.4	2	11332-BA8-0000	COVER, RH.CRANK CASE COVER	1	Y		20070425		KMYBA8BLS7C000001			
		3	11333-BA8-0000	COVER COMP., OIL FILTER	1	Y	N	20070425	20100519	KMYBA8BLS7C000001	KMYBA8BLSAC003590		
			11333-BZ1-0000	COVER COMP., OIL FILTER	1	Y		20100520		KMYBA8BLSAC003591			
GASKET, RH.COVER	0.6	4	11335-BA8-0000	SEAL, OIL FILTER	1	Y		20070425		KMYBA8BLS7C000001			
		5	11393-BA8-RZ00	GASKET, RH.CRANK CASE COVER	1	Y		20070425		KMYBA8BLS7C000001			
LEVER COMP., CLUTCH (INCLUDE RELATIVE PARTS)	0.7	6	15132-BA8-0000	SHAFT, OIL PUMP	1	N	N	20070425	20100519	KMYBA8BLS7C000001	KMYBA8BLSAC003590		
			15132-BZ1-0000	SHAFT, OIL PUMP	1	Y		20100520		KMYBA8BLSAC003591			
		7	15133-BA6-9600	RING, SET	1	Y		20070425		KMYBA8BLS7C000001			
		8	1533A-BA8-0000	ROTOR ASS'Y, OIL PUMP	1	N	N	20070425	20100519	KMYBA8BLS7C000001	KMYBA8BLSAC003590		
			1533A-BZ1-0000	ROTOR ASS'Y, OIL PUMP	1	Y		20100520		KMYBA8BLSAC003591			
		9	15331-BA8-0000	ROTOR, INNER OIL PUMP	1	N	N	20070425	20100519	KMYBA8BLS7C000001	KMYBA8BLSAC003590		
			15331-BZ1-0000	ROTOR, INNER OIL PUMP	1	N		20100520		KMYBA8BLSAC003591			
		10	15332-BA8-0000	ROTOR, OUTER OIL PUMP	1	N	N	20070425	20100519	KMYBA8BLS7C000001	KMYBA8BLSAC003590		
			15332-BZ1-0000	ROTOR, OUTER OIL PUMP	1	N		20100520		KMYBA8BLSAC003591			
				11	15412-BA8-0000	ELEMENT, OIL FILTER	1	Y	N	20070425	20100519	KMYBA8BLS7C000001	KMYBA8BLSAC003590
					15412-BA8-0010	ELEMENT, OIL FILTER	1	Y		20100520		KMYBA8BLSAC003591	
				12	15414-BA6-9600	SPRING, OIL FILTER	1	Y		20070425		KMYBA8BLS7C000001	
				13	15415-BA6-9610	VALVE, RELIEF	1	Y		20070425		KMYBA8BLS7C000001	
				14	15416-BA6-9600	SPRING, RELIEF VALVE	1	N	Y	20070425	20080619	KMYBA8BLS7C000001	KMYBA8BLS8C002914
			15416-BA8-0000	SPRING, RELIEF VALVE	1	Y		20080620		KMYBA8BLS8C002915			

E-05

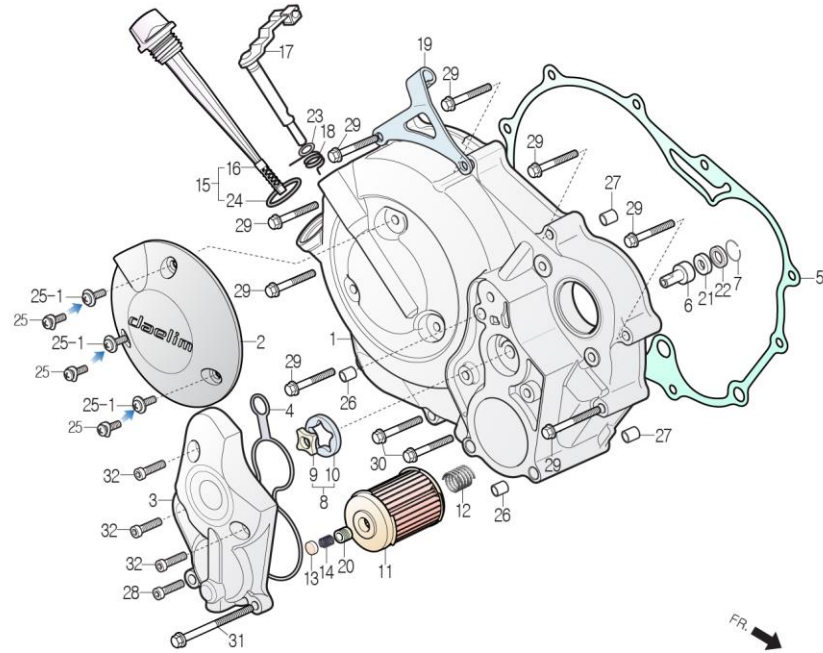
RIGHT CRANK CASE COVER



Service item	FRT	Ref No.	Part No.	Description	QTY	A/S	Exch	Start Date	End Date	Start FRM.No	End FRM.No
		15	1565A-BA6-9110	GAUGE ASS'Y, OIL LEVEL	1	N	Y	20070425	20070831	KMYBA8BLS7C000001	KMYBA8BLS8C002272
			1565A-BA8-0000	GAUGE ASS'Y, OIL LEVEL	1	Y		20070901		KMYBA8BLS8C002273	
		16	15650-BA6-9100	GAUGE, OIL LEVEL	1	N	Y	20070425	20070831	KMYBA8BLS7C000001	KMYBA8BLS8C002272
			15650-BA8-0000	GAUGE, OIL LEVEL	1	N		20070901		KMYBA8BLS8C002273	
		17	22810-BA8-0000	LEVER COMP., CLUTCH	1	Y		20070425		KMYBA8BLS7C000001	
		18	22815-BA6-7000	SPRING, CLUTCH LEVER	1	Y		20070425		KMYBA8BLS7C000001	
		19	22838-BA8-0000	HOLDER, CLUTCH WIRE	1	Y		20070425		KMYBA8BLS7C000001	
		20	90009-BA8-0000	BOLT, SOCKET, 10mm	1	Y		20070425		KMYBA8BLS7C000001	
		21	90466-BA6-9600	WASHER, 14mm	1	Y		20070425		KMYBA8BLS7C000001	
		22	91203-BA6-0030	SEAL, OIL, 14x22x5	1	Y		20070425		KMYBA8BLS7C000001	
		23	91303-BA6-1000	O-RING, 9mm	1	Y		20070425		KMYBA8BLS7C000001	
		24	91307-CB2-0010	O-RING, 18x3	1	N		20070425		KMYBA8BLS7C000001	
		25	S3892-05010-18	SCREW, WASHER, 5x10	3	N	Y	20070425	20090630	KMYBA8BLS7C000001	KMYBA8BLSAC003373
			S3891-05010-18	SCREW, WASHER, 5x10	3	N	Y	20090701	20100430	KMYBA8BLSAC003374	KMYBA8BLSAC003562
			S3891-05010-10	SCREW, WASHER, 5x10	3	Y		20100501		KMYBA8BLSAC003563	
		26	S4301-08120	PIN, DOWEL, 8x12	2	Y		20070425		KMYBA8BLS7C000001	
		27	S4301-10160	PIN, DOWEL, 10x16	2	Y		20070425		KMYBA8BLS7C000001	
		28	S6001-06028-00	BOLT, FLANGE, SH.6x28	1	Y		20070425		KMYBA8BLS7C000001	
		29	S6001-06040-00	BOLT, FLANGE, SH.6x40	8	Y		20070425		KMYBA8BLS7C000001	
		30	S6001-06050-00	BOLT, FLANGE, SH.6x50	2	Y		20070425		KMYBA8BLS7C000001	

E-05

RIGHT CRANK CASE COVER



Service item	FRT	Ref No.	Part No.	Description	QTY	A/S	Exch	Start Date	End Date	Start FRM.No	End FRM.No
		31	S6001-06095-00	BOLT, FLANGE, SH.6x95	1	Y		20070425		KMYBA8BLS7C000001	
		32	S6700-06022-10	BOLT, SOCKET, 6x22	3	N	N	20070425	20070424	KMYBA8BLS7C000001	KMYBA8BLS7C000000
			S6001-06022-00	BOLT, FLANGE, SH.6X22	3	Y		20070425		KMYBA8BLS7C000001	